

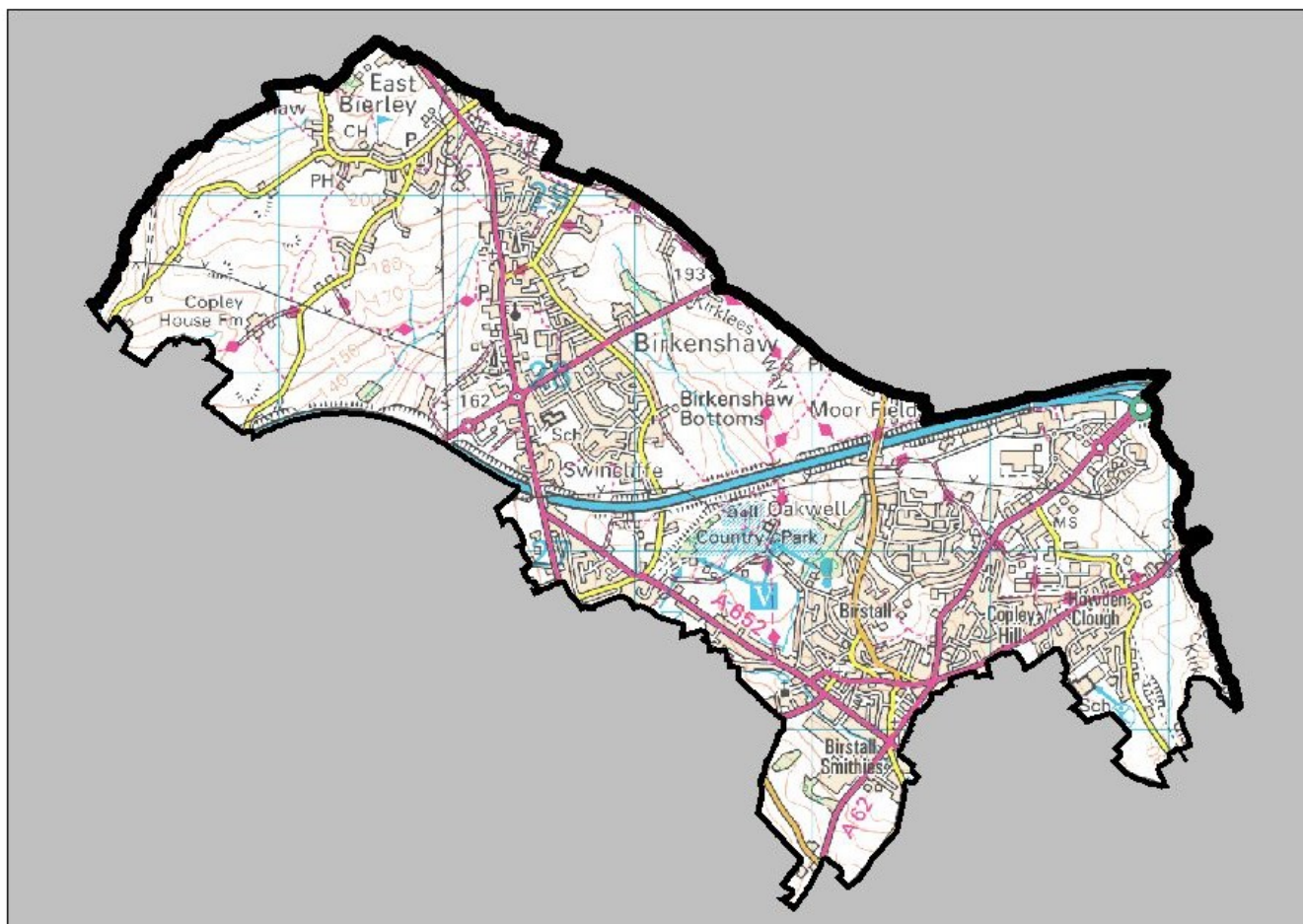


## Kirklees Census 2011 overview profile

Selection: **Birstall and Birkenshaw ward** Geo-type: Wards: Kirklees

- [Map of area](#)
- [Population, ethnicity, religion](#)
- [Long-term health problem or disability, health, unpaid care, economic activity, qualifications](#)
- [Industry, occupation, Ns-SEC](#)
- [Household spaces, tenure, type of accommodation](#)
- [Household car availability, central heating, occupancy, composition of households](#)

### Map of area



Reproduced from the Ordnance Survey with the permission of the Controller of Her Majesty's Stationery Offices. Unauthorised reproduction infringes © Crown Copyright and may lead to prosecution or civil proceedings. Kirklees Council, Licence Number 100019241, 2012. Reproduced by permission of Geographers A to Z Map Co. Ltd. Licence Number D0862.

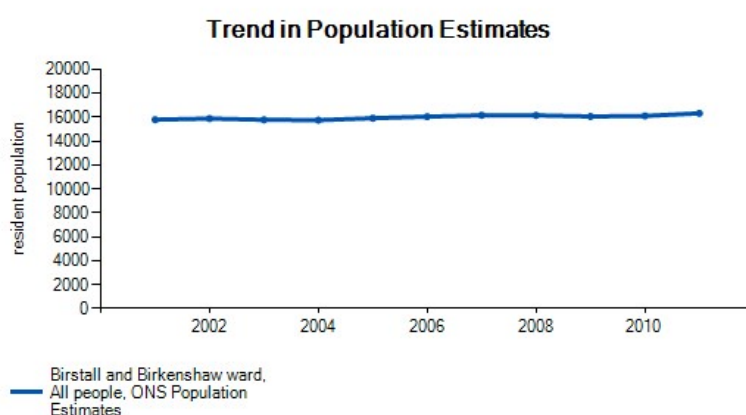
[^ top ^](#)

### Population, ethnicity, religion

The Census 2011 total population for **Birstall and Birkenshaw ward** shows that the size of the resident population in this area is **16298 people**. The table below shows the percentage breakdown by broad age groups. The actual percentage of people in each age group is shown in brackets.

Population by Broad Age Groups		Birstall and Birkenshaw ward	England	Kirklees
<a href="#">All categories: Age (2011)</a>		N/A (16,298)	N/A (53,012,456)	N/A (422,458)
<a href="#">Males (2011)</a>		7,860 (48.2)	26,069,148 (49.2)	208,657 (49.4)
<a href="#">Females (2011)</a>		8,438 (51.8)	26,943,308 (50.8)	213,801 (50.6)
<a href="#">Age 0 to 15 (2011)</a>		3,130 (19.2)	10,022,836 (18.9)	86,149 (20.4)
<a href="#">Age 16 to 29 (2011)</a>		2,643 (16.2)	9,935,641 (18.7)	78,234 (18.5)
<a href="#">Age 30 to 44 (2011)</a>		3,309 (20.3)	10,944,271 (20.7)	86,893 (20.6)
<a href="#">Age 45 to 64 (2011)</a>		4,492 (27.6)	13,449,179 (25.4)	107,032 (25.3)
<a href="#">Age 65 and over (2011)</a>		2,724 (16.7)	8,660,529 (16.3)	64,150 (15.2)
<a href="#">Age 16 to 64 (% of total population) (2011)</a>		10,444 (64.1)	34,329,091 (64.8)	272,159 (64.4)
<a href="#">Mean age (Years) (2011)</a>		N/A (40.2)	N/A (39.3)	N/A (38.4)
<a href="#">Median age (Years) (2011)</a>		N/A (41)	N/A (39)	N/A (38)
<a href="#">Density (number of persons per hectare) (Ratio) (2011)</a>		N/A (13.3)	N/A (4.1)	N/A (10.3)

Source: Office for National Statistics, 2011 Census.



The size of the population changes over time in response to births, deaths and people moving home in and out of the area.

Table Census 2011 Population by Ethnicity		Birstall and Birkenshaw ward	England	Kirklees
<a href="#">All categories: Ethnic group (2011)</a>		N/A (16298)	N/A (53012456)	N/A (422458)
<a href="#">White: English/Welsh/Scottish/Northern Irish/British (2011)</a>		15,439 (94.73)	42,279,236 (79.75)	323,890 (76.67)
<a href="#">White: Irish (2011)</a>		57 (0.35)	517,001 (0.98)	2,635 (0.62)
<a href="#">White: Gypsy or Irish Traveller (2011)</a>		5 (0.03)	54,895 (0.10)	158 (0.04)
<a href="#">White: Other White (2011)</a>		173 (1.06)	2,430,010 (4.58)	7,587 (1.80)
<a href="#">Mixed/multiple ethnic group: White and Black Caribbean (2011)</a>		102 (0.63)	415,616 (0.78)	5,167 (1.22)
<a href="#">Mixed/multiple ethnic group: White and Black African (2011)</a>		13 (0.08)	161,550 (0.31)	641 (0.15)
<a href="#">Mixed/multiple ethnic group: White and Asian (2011)</a>		73 (0.45)	332,708 (0.63)	2,714 (0.64)
<a href="#">Mixed/multiple ethnic group: Other Mixed (2011)</a>		39 (0.24)	283,005 (0.53)	1,268 (0.30)
<a href="#">Asian/Asian British: Indian (2011)</a>		124 (0.76)	1,395,702 (2.63)	20,797 (4.92)
<a href="#">Asian/Asian British: Pakistani (2011)</a>		89 (0.55)	1,112,282 (2.10)	41,802 (9.90)
<a href="#">Asian/Asian British: Bangladeshi (2011)</a>		1 (0.01)	436,514 (0.82)	731 (0.17)
<a href="#">Asian/Asian British: Chinese (2011)</a>		29 (0.18)	379,503 (0.72)	1,452 (0.34)
<a href="#">Asian/Asian British: Other Asian (2011)</a>		23 (0.14)	819,402 (1.55)	3,000 (0.71)
<a href="#">Black/African/Caribbean/Black British: African (2011)</a>		35 (0.22)	977,741 (1.84)	2,364 (0.56)
<a href="#">Black/African/Caribbean/Black British: Caribbean (2011)</a>		35 (0.22)	591,016 (1.12)	4,626 (1.10)
<a href="#">Black/African/Caribbean/Black British: Other Black (2011)</a>		7 (0.04)	277,857 (0.52)	915 (0.22)
<a href="#">Other ethnic group: Arab (2011)</a>		23 (0.14)	220,985 (0.42)	1,214 (0.29)
<a href="#">Other ethnic group: Any other ethnic group (2011)</a>		31 (0.19)	327,433 (0.62)	1,497 (0.35)

Source: Office for National Statistics, 2011 Census. Ethnicity statistics are created from responses to the ethnic group question in the 2011 Census. The ethnic group question records each person's perceived ethnic group and cultural background. The number of people in each group is shown in brackets after the percentage.



Population by Religion			
	Birstall and Birkenshaw ward	England	Kirklees
All categories: (2011)	N/A (16298)	N/A (53012456)	N/A (422458)
Christian (2011)	11,117 (68.21)	31,479,876 (59.38)	225,751 (53.44)
Buddhist (2011)	24 (0.15)	238,626 (0.45)	845 (0.20)
Hindu (2011)	69 (0.42)	806,199 (1.52)	1,544 (0.37)
Jewish (2011)	4 (0.03)	261,282 (0.49)	189 (0.05)
Muslim (2011)	158 (0.97)	2,660,116 (5.02)	61,280 (14.51)
Sikh (2011)	45 (0.28)	420,196 (0.79)	3,330 (0.79)
Other religion (2011)	37 (0.23)	227,825 (0.43)	1,300 (0.31)
No religion (2011)	3,836 (23.54)	13,114,232 (24.74)	100,829 (23.87)
Religion not stated (2011)	1,008 (6.19)	3,804,104 (7.18)	27,390 (6.48)

Source: Office for National Statistics, 2011 Census. Statistics by religion are created from responses to the voluntary religion question in the 2011 Census. The number of people in each group is shown in brackets after the percentage.

[^ top ^](#)

## Long-term health problem or disability, health, unpaid care, economic activity, qualifications

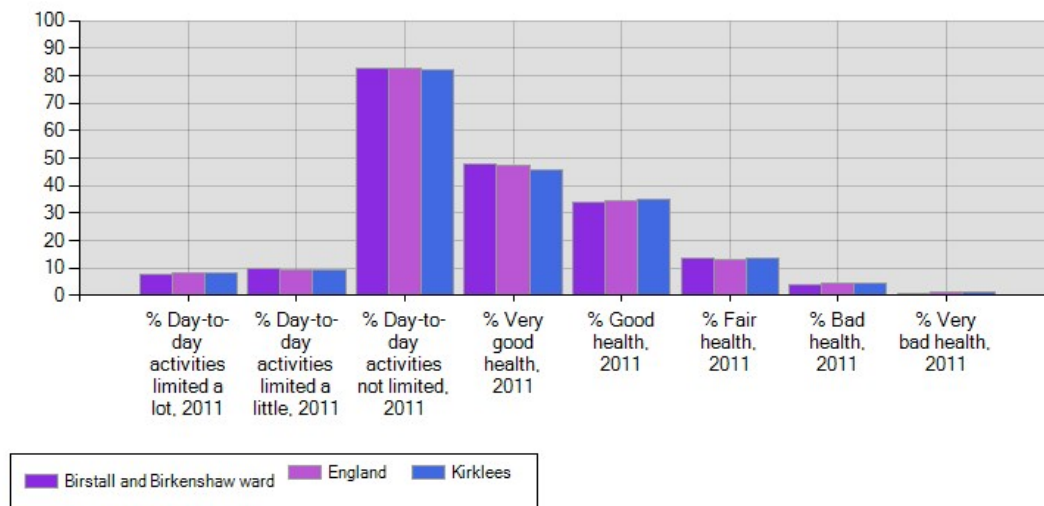
People with a long-term health problem or disability, health, unpaid care			
	Birstall and Birkenshaw ward	England	Kirklees
Day-to-day activities limited a lot (% of total population) (2011)	1,297 (7.96)	4,405,394 (8.31)	35,694 (8.45)
Day-to-day activities limited a little (% of total population) (2011)	1,575 (9.66)	4,947,192 (9.33)	39,269 (9.3)
Day-to-day activities not limited (% of total population) (2011)	13,426 (82.38)	43,659,870 (82.36)	347,495 (82.26)
Very good health (% of total population) (2011)	7,766 (47.65)	25,005,712 (47.17)	192,366 (45.54)
Good health (% of total population) (2011)	5,491 (33.69)	18,141,457 (34.22)	147,731 (34.97)
Fair health (% of total population) (2011)	2,198 (13.49)	6,954,092 (13.12)	58,042 (13.74)
Bad health (% of total population) (2011)	679 (4.17)	2,250,446 (4.25)	19,030 (4.51)
Very bad health (% of total population) (2011)	164 (1.01)	660,749 (1.25)	5,289 (1.25)
Provides no unpaid care (% of total population) (2011)	14,670 (90.01)	47,582,440 (89.76)	378,793 (89.66)
Provides 1 to 19 hours unpaid care a week (% of total population) (2011)	1,065 (6.54)	3,452,636 (6.51)	28,118 (6.66)
Provides 20 to 49 hours unpaid care a week (% of total population) (2011)	211 (1.3)	721,143 (1.36)	5,926 (1.4)
Provides 50 or more hours unpaid care a week (% of total population) (2011)	352 (2.16)	1,256,237 (2.37)	9,621 (2.28)

Source: Office for National Statistics, 2011 Census. A long-term health problem or disability that limits a person's day-to-day activities, and has lasted, or is expected to last, at least 12 months. This includes problems that are related to old age. People were asked to assess whether their daily activities were limited a lot or a little by such a health problem, or whether their daily activities were not limited at all.

General health is a self-assessment of a person's general state of health. People were asked to assess whether their health was very good, good, fair, bad or very bad. This assessment is not based on a person's health over any specified period of time.

A person is a provider of unpaid care if they look after or give help or support to family members, friends, neighbours or others because of long-term physical or mental ill health or disability, or problems related to old age. This does not include any activities as part of paid employment. No distinction is made about whether any care that a person provides is within their own household or outside of the household, so no explicit link can be made about whether the care provided is for a person within the household who has poor general health or a long-term health problem or disability.

### %Long-term health problem or disability, health



Source: ONS Census 2011.

Economic activity			
	Birstall and Birkenshaw ward	England	Kirklees
All categories: Economic activity (2011)	N/A (11,937)	N/A (38,881,374)	N/A (307,194)
Economically active: Employee: Part-time (% of all aged 16-74) (2011)	1,727 (14.47)	5,333,268 (13.72)	44,638 (14.53)
Economically active: Employee: Full-time (% of all aged 16-74) (2011)	5,011 (41.98)	15,016,564 (38.62)	112,199 (36.52)
Economically active: Self-employed (% of all aged 16-74) (2011)	1,091 (9.14)	3,793,632 (9.76)	27,494 (8.95)
Economically active: Unemployed (% of all aged 16-74) (2011)	474 (3.97)	1,702,847 (4.38)	14,465 (4.71)
Economically active: Full-time student (% of all aged 16-74) (2011)	308 (2.58)	1,336,823 (3.44)	10,718 (3.49)
Economically inactive: Retired (% of all aged 16-74) (2011)	1,907 (15.98)	5,320,691 (13.68)	44,027 (14.33)
Economically inactive: Student (including full-time students) (% of all aged 16-74) (2011)	389 (3.26)	2,255,831 (5.8)	17,593 (5.73)
Economically inactive: Looking after home or family (% of all aged 16-74) (2011)	386 (3.23)	1,695,134 (4.36)	15,227 (4.96)
Economically inactive: Long-term sick or disabled (% of all aged 16-74) (2011)	461 (3.86)	1,574,134 (4.05)	13,504 (4.4)
Economically inactive: Other (% of all aged 16-74) (2011)	183 (1.53)	852,450 (2.19)	7,329 (2.39)
Unemployed: Age 16 to 24 (% of all aged 16-74) (2011)	162 (1.36)	471,666 (1.21)	4,398 (1.43)
Unemployed: Age 50 to 74 (% of all aged 16-74) (2011)	92 (.77)	315,863 (.81)	2,392 (.78)
Unemployed: Never worked (% of all aged 16-74) (2011)	61 (.51)	276,121 (.71)	2,672 (.87)
Long-term unemployed (% of all aged 16-74) (2011)	191 (1.6)	668,496 (1.72)	5,850 (1.9)

Source: Office for National Statistics, 2011 Census. Note: A person is defined as long-term unemployed at the time of the 2011 Census if they were unemployed and the year they last worked was 2009 or earlier. Full-time students may also be employed but are not included in the part-time, full-time or self-employed figures shown in this table.



Qualifications	Birstall and Birkenshaw ward	England	Kirklees
<a href="#">No qualifications (% of all aged 16+) (2011)</a>	3,368 (25.58)	9,656,810 (22.46)	85,554 (25.44)
<a href="#">Highest level of qualification: Level 1 qualifications (% of all aged 16+) (2011)</a>	1,855 (14.09)	5,714,441 (13.29)	44,435 (13.21)
<a href="#">Highest level of qualification: Level 2 qualifications (% of all aged 16+) (2011)</a>	2,250 (17.09)	6,544,614 (15.22)	50,474 (15.01)
<a href="#">Highest level of qualification: Apprenticeship (% of all aged 16+) (2011)</a>	725 (5.51)	1,532,934 (3.57)	16,232 (4.83)
<a href="#">Highest level of qualification: Level 3 qualifications (% of all aged 16+) (2011)</a>	1,536 (11.67)	5,309,631 (12.35)	42,257 (12.57)
<a href="#">Highest level of qualification: Level 4 qualifications and above (% of all aged 16+) (2011)</a>	2,959 (22.47)	11,769,361 (27.38)	80,275 (23.87)
<a href="#">Highest level of qualification: Other qualifications (% of all aged 16+) (2011)</a>	475 (3.61)	2,461,829 (5.73)	17,082 (5.08)

Source: Office for National Statistics, 2011 Census. The highest level of qualification is derived from the question asking people to indicate all types of qualifications held. People were also asked if they held foreign qualifications and to indicate the closest equivalent. There were 12 response options (plus 'no qualifications') covering professional and vocational qualifications, and a range of academic qualifications. These are combined into five categories for the highest level of qualification, plus a category for no qualifications and one for other qualifications (which includes vocational or work related qualifications, and for foreign qualifications where an equivalent qualification was not indicated):

No Qualifications: No academic or professional qualifications.

Level 1 qualifications: 1-4 O Levels/CSE/GCSEs (any grades), Entry Level, Foundation Diploma, NVQ level 1, Foundation GNVQ, Basic/Essential Skills.

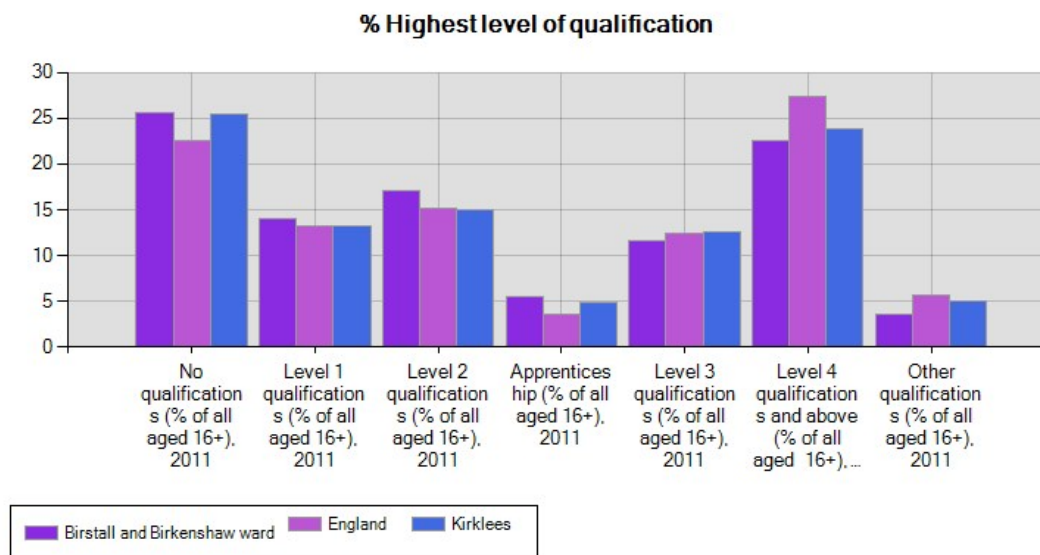
Level 2 qualifications: 5+ O Level (Passes)/CSEs (Grade 1)/GCSEs (Grades A\*-C), School Certificate, 1 A Level/ 2-3 AS Levels/VCEs, Intermediate/Higher Diploma, Welsh Baccalaureate Intermediate Diploma, NVQ level 2, Intermediate GNVQ, City and Guilds Craft, BTEC First/General Diploma, RSA Diploma.

Apprenticeship.

Level 3 qualifications: 2+ A Levels/VCEs, 4+ AS Levels, Higher School Certificate, Progression/Advanced Diploma, Welsh Baccalaureate Advanced Diploma, NVQ Level 3; Advanced GNVQ, City and Guilds Advanced Craft, ONC, OND, BTEC National, RSA Advanced Diploma.

Level 4+ qualifications: Degree (for example BA, BSc), Higher Degree (for example MA, PhD, PGCE), NVQ Level 4-5, HNC, HND, RSA Higher Diploma, BTEC Higher Level, Foundation degree (NI), Professional qualifications (for example teaching, nursing, accountancy).

Other qualifications: Vocational/Work-related Qualifications, Foreign Qualifications (Not stated/ level unknown).



Source: Office for National Statistics, 2011 Census.

[^ top ^](#)

## Industry, occupation, Ns-SEC



Industry	Birstall and Birkenshaw ward	England	Kirklees
<a href="#">All categories: Industry (2011)</a>	N/A (8,074)	N/A (25,162,721)	N/A (192,397)
<a href="#">A Agriculture, forestry and fishing (% of all aged 16-74) (2011)</a>	14 (.17)	203,789 (.81)	676 (.35)
<a href="#">B Mining and quarrying (% of all aged 16-74) (2011)</a>	3 (.04)	43,302 (.17)	187 (.1)
<a href="#">C Manufacturing (% of all aged 16-74) (2011)</a>	1,141 (14.13)	2,226,247 (8.85)	28,916 (15.03)
<a href="#">D Electricity, gas, steam and air conditioning supply (% of all aged 16-74) (2011)</a>	34 (.42)	140,148 (.56)	734 (.38)
<a href="#">E Water supply; sewerage, waste management and remediation activities (% of all aged 16-74) (2011)</a>	80 (.99)	175,214 (.7)	1,593 (.83)
<a href="#">F Construction (% of all aged 16-74) (2011)</a>	701 (8.68)	1,931,936 (7.68)	14,814 (7.7)
<a href="#">G Wholesale and retail trade; repair of motor vehicles and motor cycles (% of all aged 16-74) (2011)</a>	1,383 (17.13)	4,007,570 (15.93)	33,594 (17.46)
<a href="#">H Transport and storage (% of all aged 16-74) (2011)</a>	395 (4.89)	1,260,094 (5.01)	9,426 (4.9)
<a href="#">I Accommodation and food service activities (% of all aged 16-74) (2011)</a>	345 (4.27)	1,399,931 (5.56)	9,242 (4.8)
<a href="#">J Information and communication (% of all aged 16-74) (2011)</a>	196 (2.43)	1,024,352 (4.07)	4,653 (2.42)
<a href="#">K Financial and insurance activities (% of all aged 16-74) (2011)</a>	433 (5.36)	1,103,858 (4.39)	7,205 (3.75)
<a href="#">L Real estate activities (% of all aged 16-74) (2011)</a>	92 (1.14)	367,459 (1.46)	2,160 (1.12)
<a href="#">M Professional, scientific and technical activities (% of all aged 16-74) (2011)</a>	415 (5.14)	1,687,127 (6.71)	9,828 (5.11)
<a href="#">N Administrative and support service activities (% of all aged 16-74) (2011)</a>	399 (4.94)	1,239,422 (4.93)	7,934 (4.12)
<a href="#">O Public administration and defence; compulsory social security (% of all aged 16-74) (2011)</a>	500 (6.19)	1,483,450 (5.9)	9,884 (5.14)
<a href="#">P Education (% of all aged 16-74) (2011)</a>	797 (9.87)	2,490,199 (9.9)	20,326 (10.57)
<a href="#">Q Human health and social work activities (% of all aged 16-74) (2011)</a>	842 (10.43)	3,121,238 (12.4)	23,558 (12.24)
<a href="#">R, S, T, U Other (% of all aged 16-74) (2011)</a>	304 (3.77)	1,257,385 (5)	7,667 (3.99)

Source: Office for National Statistics, 2011 Census. A person aged 16 to 74 is defined as employed (or in employment) if in the week before the census they carried out at least one hour's paid work, either as an employee or self-employed. This includes casual or temporary work, on a government-sponsored training scheme, doing paid or unpaid work for their own or family business, being away from work ill, on maternity leave, or on holiday or temporarily laid off. Full-time students in employment are also included.

The industry in which a person aged 16 to 74 works relates to their main job, and is derived from information provided on the main activity of their employer or business. This is used to assign responses to an industry code based on the Standard Industrial Classification 2007. 'R, S, T, U Other' includes the arts, entertainment and recreation industry; other service activities; the activities of households as employers, undifferentiated goods and services producing activities of households for own use industry; and the activities of extraterritorial organisations and bodies industry.

The 'Main job' of a person aged 16 to 74 is the job in which they usually work the most hours. For people not working at the time of the census the main job relates to the person's last job. Topics based on employment all relate to a person's main job.

Occupation	Birstall and Birkenshaw ward	England	Kirklees
<a href="#">All categories: Occupation (2011)</a>	N/A (8,074)	N/A (25,162,721)	N/A (192,397)
<a href="#">1. Managers, directors and senior officials (% of all aged 16-74) (2011)</a>	886 (10.97)	2,734,900 (10.87)	20,521 (10.67)
<a href="#">2. Professional occupations (% of all aged 16-74) (2011)</a>	1,142 (14.14)	4,400,375 (17.49)	29,941 (15.56)
<a href="#">3. Associate professional and technical occupations (% of all aged 16-74) (2011)</a>	1,049 (12.99)	3,219,067 (12.79)	22,423 (11.66)
<a href="#">4. Administrative and secretarial occupations (% of all aged 16-74) (2011)</a>	1,072 (13.28)	2,883,230 (11.46)	20,707 (10.76)
<a href="#">5. Skilled trades occupations (% of all aged 16-74) (2011)</a>	1,037 (12.84)	2,858,680 (11.36)	23,698 (12.32)
<a href="#">6. Caring, leisure and other service occupations (% of all aged 16-74) (2011)</a>	681 (8.43)	2,348,650 (9.33)	17,826 (9.27)
<a href="#">7. Sales and customer service occupations (% of all aged 16-74) (2011)</a>	663 (8.21)	2,117,477 (8.42)	16,711 (8.69)
<a href="#">8. Process, plant and machine operatives (% of all aged 16-74) (2011)</a>	697 (8.63)	1,808,024 (7.19)	18,843 (9.79)
<a href="#">9. Elementary occupations (% of all aged 16-74) (2011)</a>	847 (10.49)	2,792,318 (11.1)	21,727 (11.29)

Source: Office for National Statistics, 2011 Census. A person aged 16 to 74 is defined as employed (or in employment) if in the week before the census they carried out at least one hour's paid work, either as an employee or self-employed. This includes casual or temporary work, on a government-sponsored training scheme, doing paid or unpaid work for their own or family business, being away from work ill, on maternity leave, or on holiday or temporarily laid off."

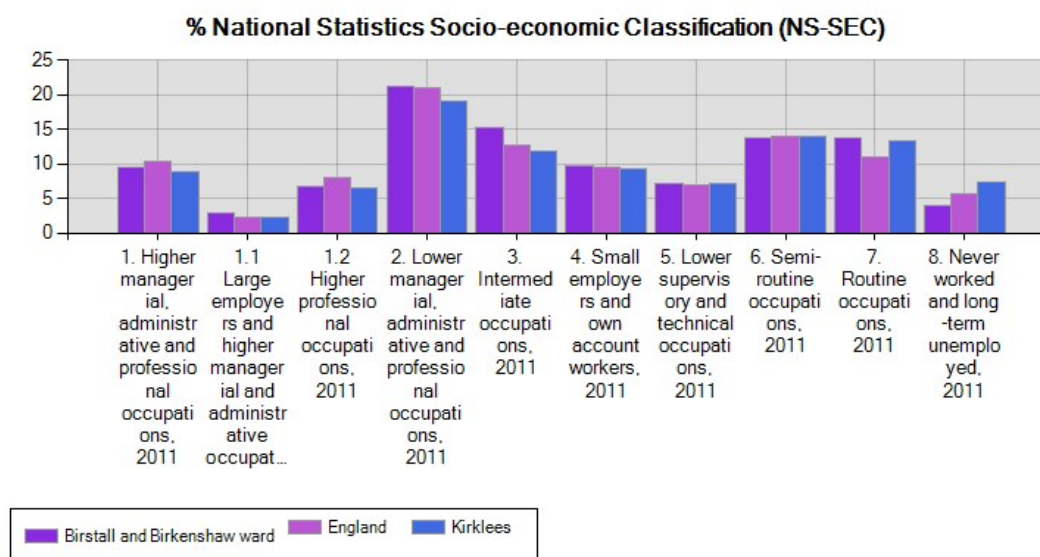
A person's occupation relates to their main job and is derived from either their job title or details of the activities involved in their job. This is used to assign responses to an occupation code based on the Standard Occupational Classification 2010 (SOC2010). The 'Main job' of a person aged 16 to 74 is the job in which they usually work the most hours. For people not working at the time of the census the main job relates to the person's last job. Topics based on employment all relate to a person's main job.



National Statistics Socio-economic Classification (NS-SEC)			
	Birstall and Birkenshaw ward	England	Kirklees
All categories: NS-SeC (2011)	N/A (11,937)	N/A (38,881,374)	N/A (307,194)
1. Higher managerial, administrative and professional occupations (% of all aged 16-74) (2011)	1,135 (9.51)	4,045,823 (10.41)	27,100 (8.82)
1.1 Large employers and higher managerial and administrative occupations (% of all aged 16-74) (2011)	338 (2.83)	926,352 (2.38)	7,231 (2.35)
1.2 Higher professional occupations (% of all aged 16-74) (2011)	797 (6.68)	3,119,471 (8.02)	19,869 (6.47)
2. Lower managerial, administrative and professional occupations (% of all aged 16-74) (2011)	2,524 (21.14)	8,132,107 (20.92)	58,371 (19)
3. Intermediate occupations (% of all aged 16-74) (2011)	1,828 (15.31)	4,972,044 (12.79)	36,498 (11.88)
4. Small employers and own account workers (% of all aged 16-74) (2011)	1,151 (9.64)	3,662,611 (9.42)	28,443 (9.26)
5. Lower supervisory and technical occupations (% of all aged 16-74) (2011)	847 (7.1)	2,676,118 (6.88)	22,095 (7.19)
6. Semi-routine occupations (% of all aged 16-74) (2011)	1,635 (13.7)	5,430,863 (13.97)	42,872 (13.96)
7. Routine occupations (% of all aged 16-74) (2011)	1,650 (13.82)	4,277,483 (11)	41,254 (13.43)
8. Never worked and long-term unemployed (% of all aged 16-74) (2011)	477 (4)	2,180,026 (5.61)	22,922 (7.46)

Source: Office for National Statistics, 2011 Census. The National Statistics Socio-economic Classification (NS-SEC) provides an indication of socio-economic position based on occupation. It is an Office for National Statistics standard classification. To assign a person aged 16 to 74 to an NS-SEC category their occupation title is combined with information about their employment status, whether they are employed or self-employed and whether or not they supervise other employees. Full-time students are recorded in the 'full-time students' category regardless of whether they are economically active or not. The rebased version of NS-SEC used in census results uses occupation coded to SOC2010. More information about the classification can be found at [SOC2010](#)

In 2011 Census results, because the census did not ask a question about the number of employees at a person's workplace, the reduced method of deriving NS-SEC (which does not require this information) is used. Not classifiable for other reasons' includes any people who cannot be allocated to another category. The sub-category of NS-SEC 'Occupation not stated or inadequately described' which usually forms part of the 'Not classified' category is not applicable in census results because missing answers are imputed.



Source: Office for National Statistics, 2011 Census. % is percentage of all aged 16 to 74.

[^ top ^](#)

## Household spaces, tenure, type of accommodation

Households spaces and accommodation type			
	Birstall and Birkenshaw ward	England	Kirklees
All categories: Household spaces (2011)	N/A (7388)	N/A (23044097)	N/A (181545)
All categories: Household spaces (% of all household spaces) (2011)	7,388 (100.00)	23,044,097 (100.00)	181,545 (100.00)
Household spaces with at least one usual resident (% of all household spaces) (2011)	7,017 (94.98)	22,063,368 (95.74)	173,525 (95.58)
Household spaces with no usual residents (% of all household spaces) (2011)	371 (5.03)	980,729 (4.27)	8,020 (4.43)
Whole house or bungalow: Detached (% of all household spaces) (2011)	1,567 (21.21)	5,128,552 (22.26)	36,923 (20.34)
Whole house or bungalow: Semi-detached (% of all household spaces) (2011)	2,675 (36.21)	7,076,395 (30.71)	59,537 (32.80)
Whole house or bungalow: Terraced (including end-terrace) (% of all household spaces) (2011)	2,237 (30.28)	5,642,969 (24.49)	61,338 (33.79)
Flat, maisonette or apartment: Purpose-built block of flats or tenement (% of all household spaces) (2011)	815 (11.03)	3,854,451 (16.73)	19,039 (10.49)
Flat, maisonette or apartment: Part of a converted or shared house (including bed-sits) (% of all household spaces) (2011)	43 (0.58)	984,284 (4.27)	3,073 (1.69)
Flat, maisonette or apartment: In a commercial building (% of all household spaces) (2011)	48 (0.65)	257,218 (1.12)	1,451 (0.80)
Caravan or other mobile or temporary structure (% of all household spaces) (2011)	3 (0.04)	100,228 (0.44)	184 (0.10)

Source: Office for National Statistics, 2011 Census. A household space is the accommodation used or available for use by an individual household. Household spaces are identified separately in census results as those with at least one usual resident, and those that do not have any usual residents. A household space with no usual residents may still be used by short-term residents, visitors who were present on census night, or a combination of short-term residents and visitors. Vacant household spaces and household spaces that are used as second addresses are also classified in census results as household spaces with no usual residents.

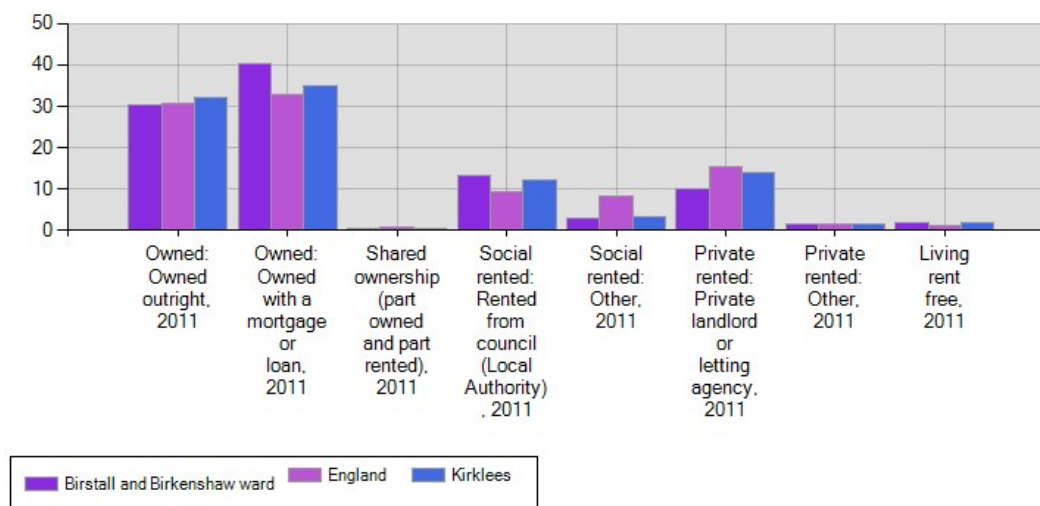
Tenure			
	Birstall and Birkenshaw ward	England	Kirklees
All categories: Tenure (2011)	N/A (7017)	N/A (22063368)	N/A (173525)
Owned: Owned outright (% of households) (2011)	2,123 (30.26)	6,745,584 (30.57)	55,569 (32.02)
Owned: Owned with a mortgage or loan (% of households) (2011)	2,819 (40.17)	7,229,440 (32.77)	60,792 (35.03)
Shared ownership (part owned and part rented) (% of households) (2011)	13 (0.19)	173,760 (0.79)	612 (0.35)
Social rented: Rented from council (Local Authority) (% of households) (2011)	921 (13.13)	2,079,778 (9.43)	20,886 (12.04)
Social rented: Other (% of households) (2011)	204 (2.91)	1,823,772 (8.27)	5,639 (3.25)
Private rented: Private landlord or letting agency (% of households) (2011)	699 (9.96)	3,401,675 (15.42)	24,523 (14.13)
Private rented: Other (% of households) (2011)	109 (1.55)	314,249 (1.42)	2,418 (1.39)
Living rent free (% of households) (2011)	129 (1.84)	295,110 (1.34)	3,086 (1.78)

Source: Office for National Statistics, 2011 Census. A household is defined as one person living alone, or a group of people (not necessarily related) living at the same address who share cooking facilities and share a living room or sitting room or dining area. A household must contain at least one person whose place of usual residence is at the address. A group of short-term residents living together is not classified as a household, and neither is a group of people at an address where only visitors are staying.

Tenure provides information about whether a household rents or owns the accommodation that it occupies and, if rented, combines this with information about the type of landlord who owns or manages the accommodation. Accommodation that is 'private rented, other' includes accommodation that is rented from an employer of a household member, relative or friend of a household member, or other non-social rented accommodation. Accommodation that is 'other social rented' includes accommodation that is rented from a registered social landlord, housing association, housing co-operative or charitable trust.



## % Household tenure



Source: Office for National Statistics, 2011 Census. % is percentage of all households.

[^ top ^](#)

## Household car availability, central heating, occupancy, composition of households

Car availability, occupancy, central heating	Birstall and Birkenshaw ward	England	Kirklees
<a href="#">No cars or vans in household (% of households) (2011)</a>	1,569 (22.36)	5,691,251 (25.80)	45,875 (26.44)
<a href="#">Does not have central heating (% of households) (2011)</a>	362 (5.16)	594,561 (2.70)	8,895 (5.13)
<a href="#">Occupancy rating (rooms) of -1 or less (% of households) (2011)</a>	448 (6.38)	1,928,596 (8.74)	14,698 (8.47)
<a href="#">Occupancy rating (bedrooms) of -1 or less (% of households) (2011)</a>	191 (2.72)	1,060,967 (4.81)	8,587 (4.95)
<a href="#">Average household size (Average) (2011)</a>	N/A (2.3)	N/A (2.4)	N/A (2.4)

Source: Office for National Statistics, 2011 Census. Occupancy rating provides a measure of whether a household's accommodation is overcrowded or under occupied. There are two measures of occupancy rating, one based on the number of rooms in a household's accommodation, and one based on the number of bedrooms. The ages of the household members and their relationships to each other are used to derive the number of rooms/bedrooms they require, based on a standard formula. The number of rooms/bedrooms required is subtracted from the number of rooms/bedrooms in the household's accommodation to obtain the occupancy rating. An occupancy rating of -1 implies that a household has one fewer room/bedroom than required, whereas +1 implies that they have one more room/bedroom than the standard requirement.

Household composition	Birstall and Birkenshaw ward	England	Kirklees
<a href="#">All categories: Household composition (2011)</a>	N/A (7017)	N/A (22063368)	N/A (173525)
<a href="#">One person household: Aged 65 and over (% of all households) (2011)</a>	872 (12.43)	2,725,596 (12.35)	20,412 (11.76)
<a href="#">One person household: Other (% of all households) (2011)</a>	1,166 (16.62)	3,940,897 (17.86)	32,141 (18.52)
<a href="#">One family only: All aged 65 and over (% of all households) (2011)</a>	583 (8.31)	1,789,465 (8.11)	13,326 (7.68)
<a href="#">Dependent children in household: All ages (% of all households) (2011)</a>	2,118 (30.18)	6,425,647 (29.12)	53,538 (30.85)
<a href="#">One family only: Lone parent: Dependent children (% of all households) (2011)</a>	516 (7.35)	1,573,255 (7.13)	12,593 (7.26)

Source: Office for National Statistics, 2011 Census. A dependent child is a person aged 0 – 15 in a household (whether or not in a family) or aged 16 – 18 in full-time education and living in a family with his or her parent(s). It does not include any children who have a spouse, partner or child living in the household.

A lone parent family consists of a father or mother with his or her child(ren) where the parent does not have a spouse, same-sex civil partner or partner in the household and the child(ren) do not have a spouse, same-sex civil partner or child in the household. A lone grandparent with his or her grandchild(ren) are also considered a lone parent family if there are no children in the intervening generation present in the household (note that children of the grandparent may also be present if they are not parents or grandparents of the youngest generation).

[^ top ^](#)