


Quick Guide to the Kirklees Observatory

Themed profiles


There are eight themed profiles accessed from the home page which are accessed by clicking on the large icons below:



By default, clicking on one of the icons will bring up a profile for Kirklees. The user can select other geographies by clicking on  Reports which then brings up the following:

SELECT A REPORT Ward	SELECT AN AREA Almondbury
-------------------------	------------------------------

Clicking on 'SELECT A REPORT' reveals other geographies, and 'SELECT AN AREA' then reveals areas within that geography.

The user can also access thematic maps by clicking on  Map where there are a variety of options to change the mapped data, add layers, classify the map, and view a table of the data.

Overview profiles

These are profiles which contain a selection of indicators that cut across themes. From the home page click on **Data** and then Overview at the top of the list.

This brings up the following:

OVERVIEW REPORTS

 Community Hub	 ABC Hub
---	---

Clicking on the first column displays a list of geographies; the second column allows the user to select a geography.

Data Explorer

Data Explorer allows the user to download or map indicators. From the home page click on **Data Explorer** then use Search or Filter to select an indicator. Clicking on Filter allows the user to restrict searches to Themes, Geography or Publisher; more than one box can be ticked to narrow the results. An example result is displayed below:


Males age group 0 - 15

Office for National Statistics - Population / Mid-year estimates / Other groupings / Male

Estimates of the usual resident population in England and Wales for males of age group 0 - 15 >

LSOA	LA	District Committee	Community Hub	Library/LIC	Locality	Parish and town	North and South Kirklees	Ward	Region	Country
------	----	--------------------	---------------	-------------	----------	-----------------	--------------------------	------	--------	---------

Click on the required geography to return all the data available, there may be many months or years in some instances, though the returned data can be further filtered by date by clicking on

	. The data can be downloaded by clicking on  .
---	---

Data can also be viewed in different ways by clicking on the following icons:

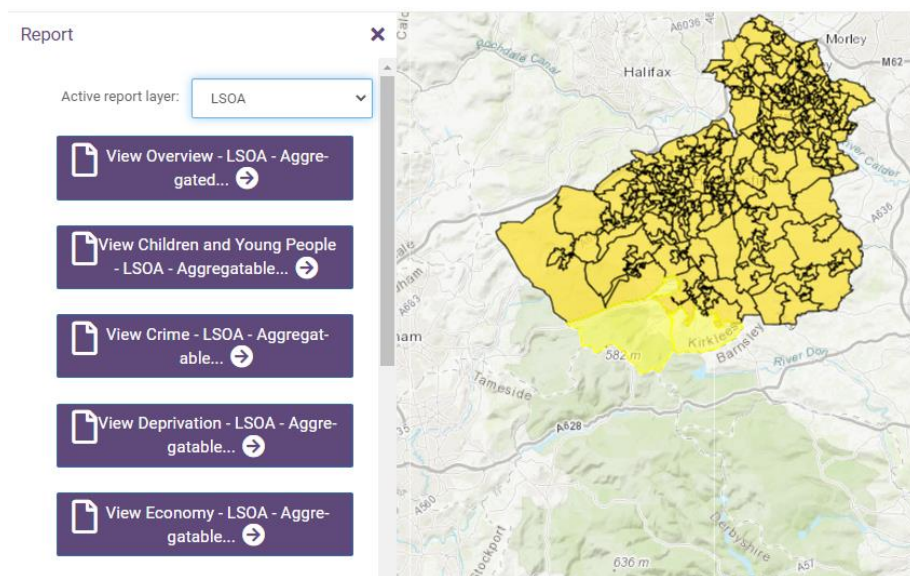
 Map	 Time Series	 Ranked Bar Chart
---	---	--

When data has been mapped it is possible to change geographies, change date of indicator, alter the map classification used, and filter to map only certain features within a geography such as a sub-set of wards. See below for how the options appear:

Ward	2019	Quantile		Features
------	------	----------	---	----------

Custom Area Explorer

This option allows the user to create a profile based on a set of areas. The areas are selected by clicking on a map. Two types of area are available, Lower Super Output Areas (LSOA) or wards. Once an area or areas have been selected then the available profile reports appear alongside the map as shown in the example below. Clicking on one of the profiles then generates a report based on your selected features. The software sums together the data values for each area within the report.



Resources

Resources contains links to useful sites and other documents. The options are shown below:

- Census 2011
- Economy
- Housing
- Indices of Deprivation
- Population
- Public Health England profiles
- Ward street maps
- Miscellaneous